

# GTH AGROMET

## NO WASTE, ONLY RESOURCES



### CIRCULAR ECONOMY AT THE SERVICE OF INDUSTRY AND THE AGRI-FOOD SECTOR

GTH Agromet is the Greenthesis Group company that deals with the **treatment and recovery of waste** by transforming it into resources through circular economy solutions. After 30 years of experience with leading companies in the waste sector, **the company was founded in 2017** to bring to the market a specific and innovative activity aimed, in particular, at the industrial sector and the Italian agri-food supply chain. Its mission stems from one fact: **at least 1/3 of the food produced each year on a global scale is wasted and lost.**

### A VIRTUOUS CYCLE

With GTH Agromet the recovery cycle processes and restores waste from packaging and the organic matrix, both of which are recoverable. The applied technology makes it possible to **convert all agri-food products into organic matrix to be sent for biogas production** while also recovering almost all treated packaging (**more than 95%**), with the remainder recovered as RDF in dedicated plants. This special treatment process allows the company to provide **solutions for all types of producers in the sector** because it is suitable for all types of food waste. Moreover, the activity is carried out using processing systems that do not involve the use of chemicals or the emission of pollutants.

### THE NUMBERS INVOLVED

**5.000 square metres**  
> covered area for waste treatment.

**20 thousand tonnes**  
> annual authorised treatment capacity.

## AN EVOLVED PARTNER FOR A SUSTAINABLE VISION

GTH Agromet represents a **reliable point of reference** for all companies that have a **surplus of non-saleable products** which need to be disposed of properly. Thanks to the use of innovative technology and specialised operators, we offer **maximum cost-effectiveness** within a virtuous process.

The company is organised for the **collection of food waste** for human use or pet food, **products that have expired or are close to expiry**, as well as returned, unsold, defective or damaged products, batches of products that for whatever reason - including commercial strategies - are removed from distribution.

GTH Agromet also offers customers the possibility of delivering **mixed pallets** (whose processing requires more complex treatments) and a **rental service for removable containers and transport**.

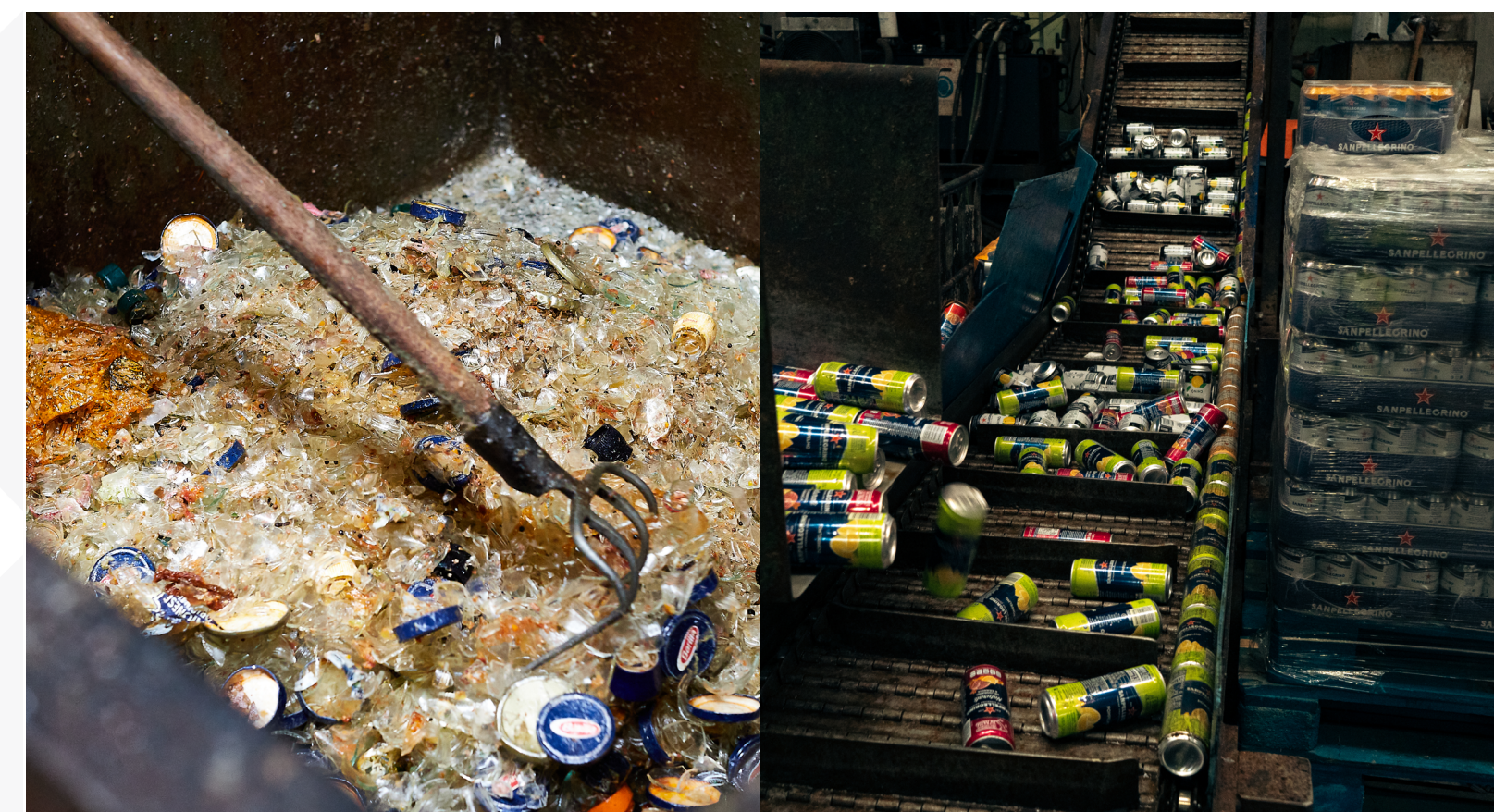
#### Other services offered:

- Assessment of the type of packaging to determine treatment;
- Analysis and sampling of bulk materials to exclude the risk of contamination;
- Advisory services for better packaging management (service dedicated to partners);
- Certification of destruction to certify disposal in accordance with the law and, therefore, removal from the market, to be produced to competent authorities in the event of checks and/or requests.

#### Our certifications:



UNI EN ISO 19001 : 2015





## OVER 40 CATEGORIES OF WASTE HANDLED

The Gazzuolo plant recovers **solid, semi-solid, liquid, packaged or unpackaged waste**, including on mixed pallets, from over 40 product categories.

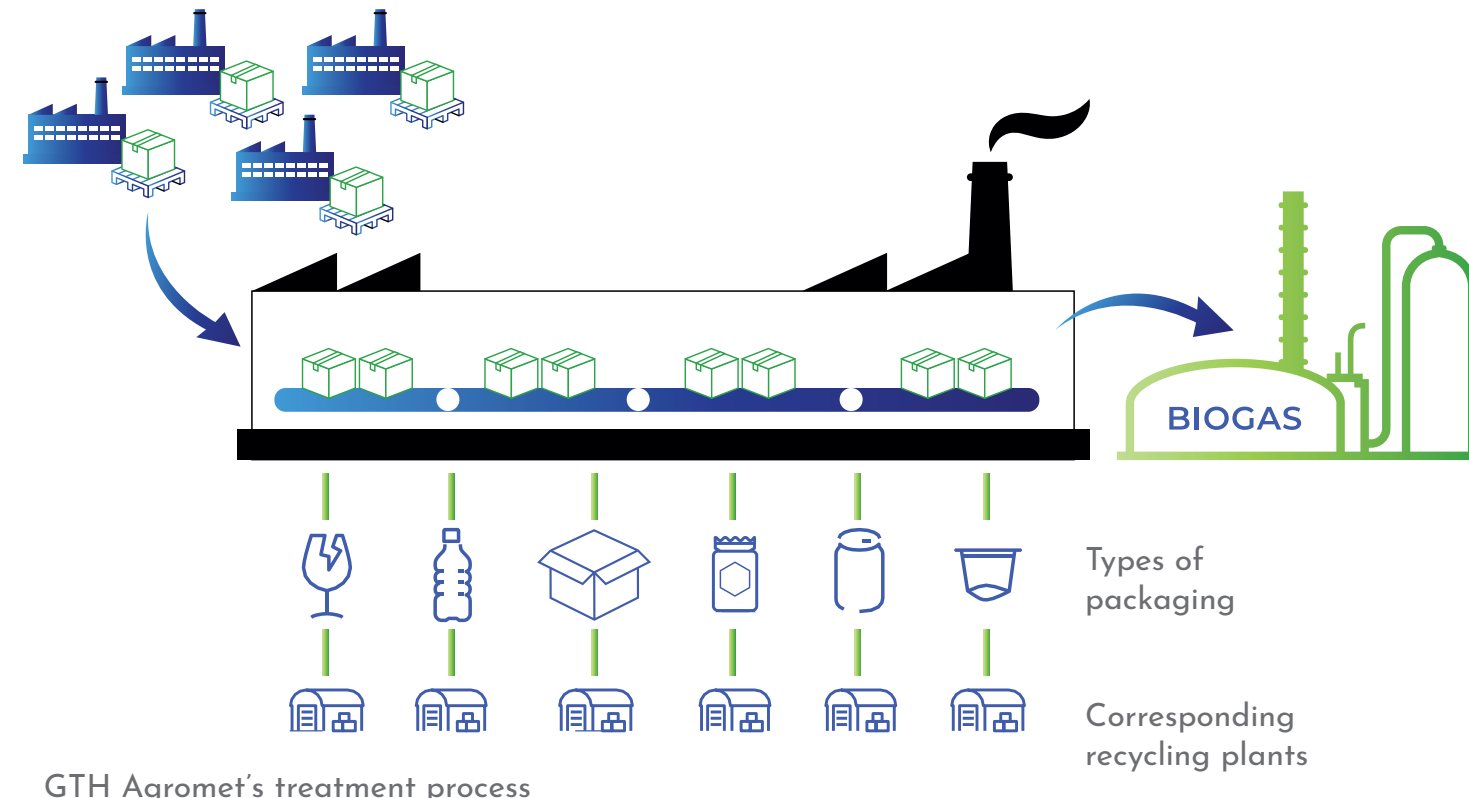
### Some examples of food handled by the company

The company recovers **ready-made sauces** containing meat, fish, vegetables, tomato puree, pickled or preserved vegetables, olive oil, fruit in syrup, jams and raw materials for jam. As well as **fodder and pet food**, wine, beer, spirits, coffee, sugar, flour, yeast, puddings, **bakery products**, frozen convenience foods, **vacuum-packed foods**, ready-made soups, pasta, confectionery, **beverages in general**, fruit juices, milk, yoghurt, cheese, dairy products, cured meats, processing intermediates, food products prepared in various recipes with the above products, etc.

GTH Agromet also handles **animal by-products and waste (ABP)** to be used for the production of energy/biomethane from renewable sources.

### Packaging as well as food

The recovery cycle allows food to be separated from its packaging quickly, efficiently and safely. For this purpose, the types of packaging that can be processed are: **glass, tinplate, aluminium, PET, various types of plastics, paper** and bonded cartons, which can be delivered as primary and/or secondary packaging. Thanks to the technology used, **more than 95% of treated waste is recovered in the form of packaging waste** in glass, plastic, paper, aluminium, tinplate and metal, which are delivered to recovery plants, and in the form of organic matrix to be used in electrical energy and/or biomethane generation plants from renewable sources.



GTH Agromet's treatment process

## 7 REASONS TO CHOOSE GTH AGROMET

- 1 Recovery of packaging materials** such as glass, metals, paper, cardboard, polyethylene, PET and many others for reintroduction into the secondary raw materials market.
- 2 Recovery of non-marketable food products** to be used in biogas plants for the production of electricity and/or biomethane from renewable sources.
- 3 Reduction in quantities** of waste sent to landfills.
- 4 Correct disposal** of batches of food products that can no longer be marketed.
- 5 Financial savings** compared to disposal costs with traditional methods.
- 6 Certainty of destruction** of batches in compliance with tax and health regulations.
- 7 Reduction of waste** of natural resources.



GTH Agromet is part of the Greenthesi Group.

With thirty years of experience in the Green Economy sector, the Group is one of Italy's leading integrated operators and has global experience in environmental services, including remediation solutions, waste-to-energy technologies, wastewater treatment, sludge management, biogas and biomethane production.

[www.greenthesisgroup.com](http://www.greenthesisgroup.com)



THINK GREEN, ACT SMART

# GTH AGROMET

### Operational Headquarters

Via Unità D'Italia 6 - 46010 Gazzuolo (MN)

[gthagromet.greenthesisgroup.com](http://gthagromet.greenthesisgroup.com)

Tel. +39 02 89380552 Mail. [info.gthagromet@greenthesisgroup.com](mailto:info.gthagromet@greenthesisgroup.com)

### Headquarters

Via Cassanese 45 - 20054 Segrate (MI)

[greenthesis.greenthesisgroup.com](http://greenthesis.greenthesisgroup.com)

Tel. +39 02 893801 Mail. [info@greenthesisgroup.com](mailto:info@greenthesisgroup.com)